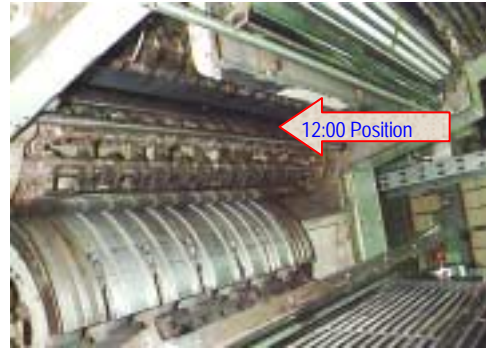
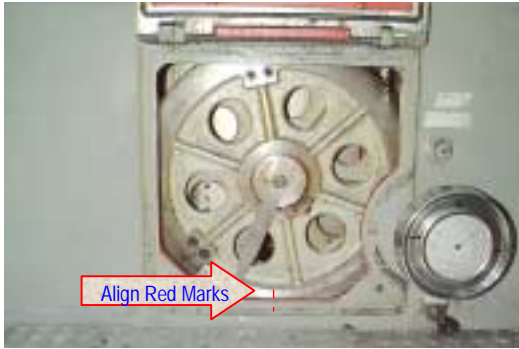
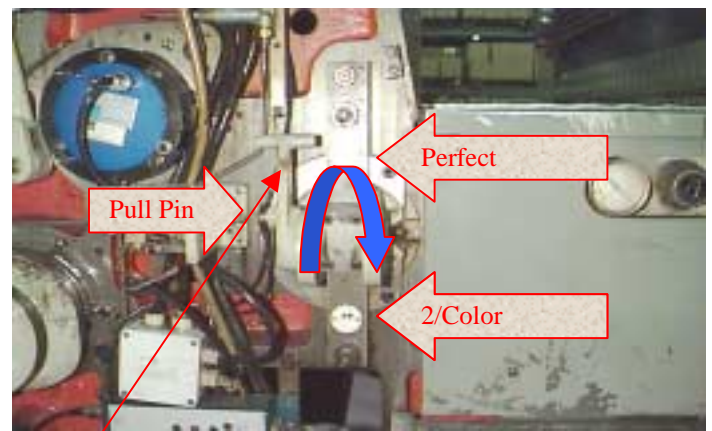
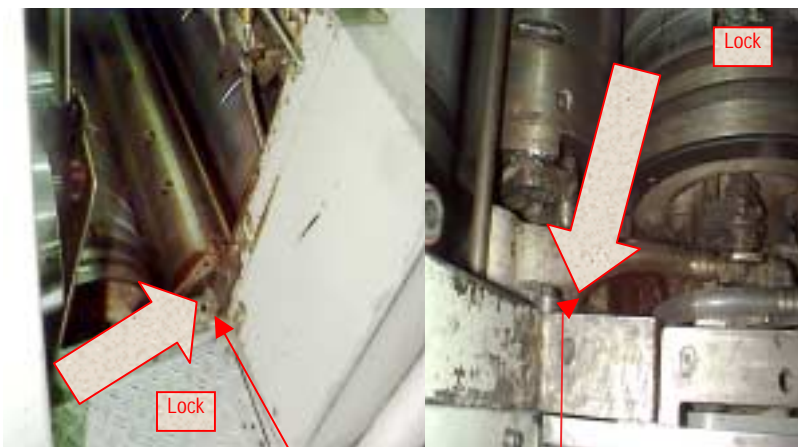


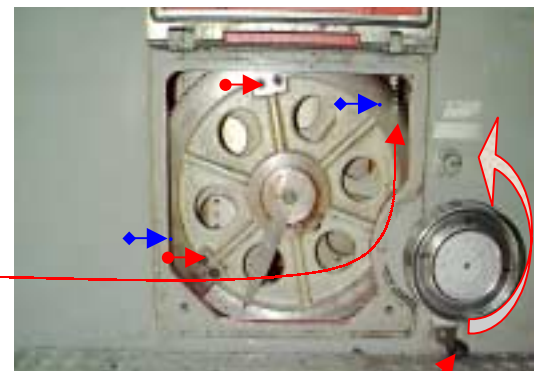
CHANGE OVER FROM 2 COLOR TO PERFECT



- 1.) Align red marks on #2 transfer cylinder gear.
Perfecting cylinder grippers should be facing 12:00.



- 2.) Loosen locks for bolts for horseshoe cam (5 mm Allen) located on horseshoe cam and hole in sideframe driveside of press. On operator side pull pin and move handle to the label of arrows pointing to each other.
- 3.) Retighten lock bolts that were loosened in step 2.
- 4.) Remove 2 taper pins in #2 transfer cylinder gear. ↔
- 5.) Loosen six 8mm Allen bolts in #2 transfer cylinder gear. →
- 6.) Pull out knob on #2 transfer cylinder gear and turn 180 degrees. ↻



- 7.) Hand crank press to sheet size. (measure sheet).
- 8.) Tighten 6 bolts loosened in step 5.
- 9.) Pull black knob on #2 transfer cylinder cam lock and move to top in counter clockwise direction, move crumehandwheel to sheetsize and reposition black knob in original position.
- 10.) Loosen 2 8mm allen bolts located on #2 transfer cylinder journal 1 bolt on each side.
- 11.) Move sucker heads by hand to sheet size going by scale on operator side of #2 transfer cylinder.
- 12.) Tighten 2 bolts loosened in step 10.
- 13.) Inch sheet in press and check gripper bite on 2nd unit.

