

## MILLER TP 104 Plus Specifications

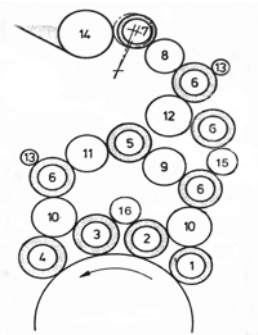
Specifications	MM	Inches	
Maximum Sheet Size	720 x 1040	28 3/8 x 41	
Minimum Sheet Size	360 x 520	14 1/4 x 20 1/2	
Range Of Stock Thickness	.06-.5	.0025-.020	
Maximum Image Size Straight Color	710 x 1030	27 15/16 x 40 1/2	
Maximum Image Size Perfecting	700 x 1040	27 1/2 x 41	
Gripper Margin	10.5-11.5	13/32-7/16	
Maximum Plate Size	795 x 1045	31 1/4 x 41 1/8	
Edge Of Maximum Plate To Start Print	45	1 3/4	
Minimum Plate Size	775 x 1045	30 1/2 x 41 1/8	
Edge Of Minimum Plate To Start Print	35	1 3/8	
Standard Plate Cylinder Grind	0.5	0.020	
Thickness Of Plate With Packing	0.5	0.020	
Blanket Size Unquenched (Add 1" for Punched)	885 x 1060	34 7/8 x 41 3/4	
Blanket Cylinder Undercut	2.0	0.079	
Blanket Thickness With Packing	2.1	0.083	
Maximum Feeder Pile With Pallet	1400	4' 7"	
Maximum Delivery Pile With Pallet	1130	3' 8 1/2"	
Maximum Running Speed	11,500 IPH	11,500 IPH	depending on job and type of format

Color Units	Net Weight Lbs.	Press Length
2	35,300	21' 1/4"
4	61,700	28' 9 19/32"
5	75,000	32' 8"
6	88,200	36' 6 7/16"
7	101,400	40' 4 7/8"
8	114,600	44' 3 1/4"

Color Units	Drive Motor HP	Volts	Electrical Service 3 Phase
2	35.4	380	70 KVA
4	47.6	380	90 KVA
5	47.6	380	90 KVA
6	63.9	380	110 KVA
7	63.9	380	118 KVA
8	74.8	380	131 KVA

110 VAC Single Phase 20 A Also Required

Inking Unit	Quantity	Description	Diameter in Inches
1	1	Form Roller Rubber	2.992
2	1	Form Roller Rubber	3.110
3	1	Form Roller Rubber	3.228
4	1	Form Roller Rubber	3.386
5	1	Distributor Rubber	2.953
6	4	Distributor Rubber	2.953
7	1	Ductor Roller Rubber	2.697
8	1	Distributor Rilsan	2.720
9	1	Distributor Rilsan	3.075
10	2	Distributor Rilsan	3.193
11	1	Distributor Rilsan	3.075
12	1	Distributor Rilsan	3.311
13	2	Rider Roller Rilsan	1.575
14	1	Fountain Roller Steel	4.724
15	1	Distributor Rilsan	2.362
16	1	Rider Roller Rilsan	2.362



Miller Alcotron Dampening	Quantity	Description	Diameter in Inches
17	1	Form Roller Rubber	4.016
18	1	Fountain Roller Chrome Plated	3.661
19	1	Metering Roller Rubber	3.425
20	1	Bridge Roller Rilsan	2.559



Johannisberg

# GRUNDPLAN

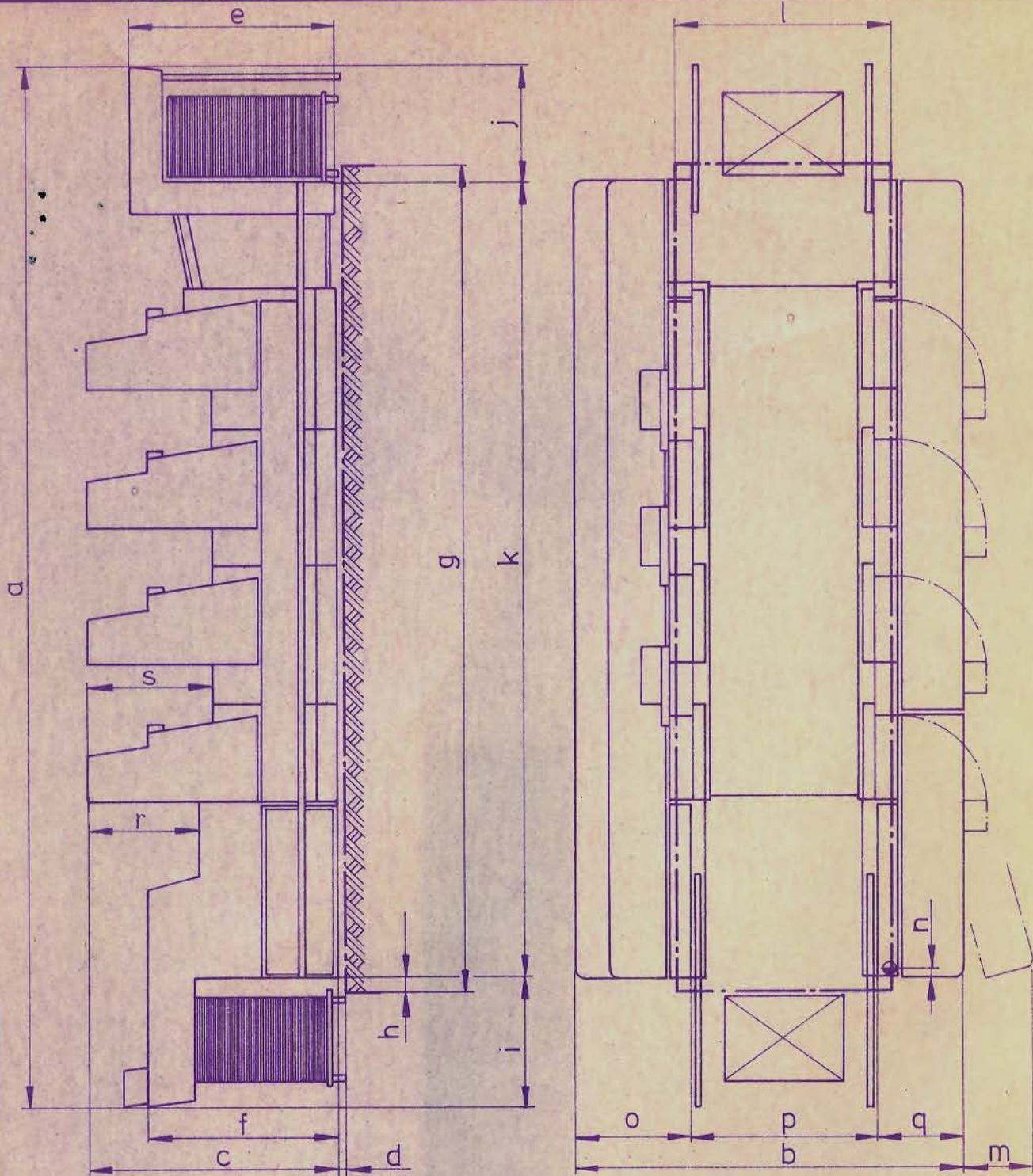
4-FARBEN-BOGEN-OFFSETMASCHINE  
FÜR SCHÖN UND WIDERDRUCK  
BOGENFORMAT: 720 : 1040 mm

# FLOOR PLAN

FOUR COLOR PERFECTOR  
OFFSET PRESS  
SHEET SIZE 28 3/8" 41"

TYPE: TP 104 <sup>4/c</sup>

984 00 04 1



DIESE ---LINIEN GELTEN FÜR DAS FUNDAMENT  
THESE ---LINES MARK THE FOUNDATION

● ELEKTRISCHE ZULEITUNG  
POWER IN-FEED LINES

MASSTAB 1 : 50  
SCALE 1 : 50

	a	b	c	d	e	f	g	h	i	j	k	l	m
mm	8778	3340	2175	30 - 50	1732	1580	6840	130	1090	1057	6631	1800	580
Inch	28'9 1/32"	10'11 1/2"	7'1 5/8"	1 3/16" - 2"	5'8 3/16"	5'2 3/16"	22'5 5/16"	5 1/8"	3'6 7/8"	3'5 5/8"	21'9 1/16"	5'10 7/8"	10 7/8"
	n	o	p	q	r	s	t	u	v	w	x	y	z
mm	75	1005	1575	760	1033	1063							
Inch	3"	3'3 1/2"	5'2"	2'6"	3'4 11/16"	3'5 7/8"							

984 00 04 1 (986)

Miller-Johannisberg Druckmaschinen GmbH

PROPRIETARY NOTE: THIS DRAWING IS THE PROPERTY OF MILLER PRINTING EQUIPMENT CORPORATION AND IS SUBMITTED IN CONFIDENCE AND SHALL NOT BE REPRODUCED, COPIED, COMMUNICATED, OR DISCLOSED TO OTHERS.

14 1988

Vertical text on the right edge of the page.



Johannisberg

# GRUNDPLAN

6-FARBEN-BOGEN-OFFSETMASCHINE  
FÜR SCHÖN-UND WIDERDRUCK  
BOGENFORMAT: 720 x 1040 mm

# FLOOR PLAN

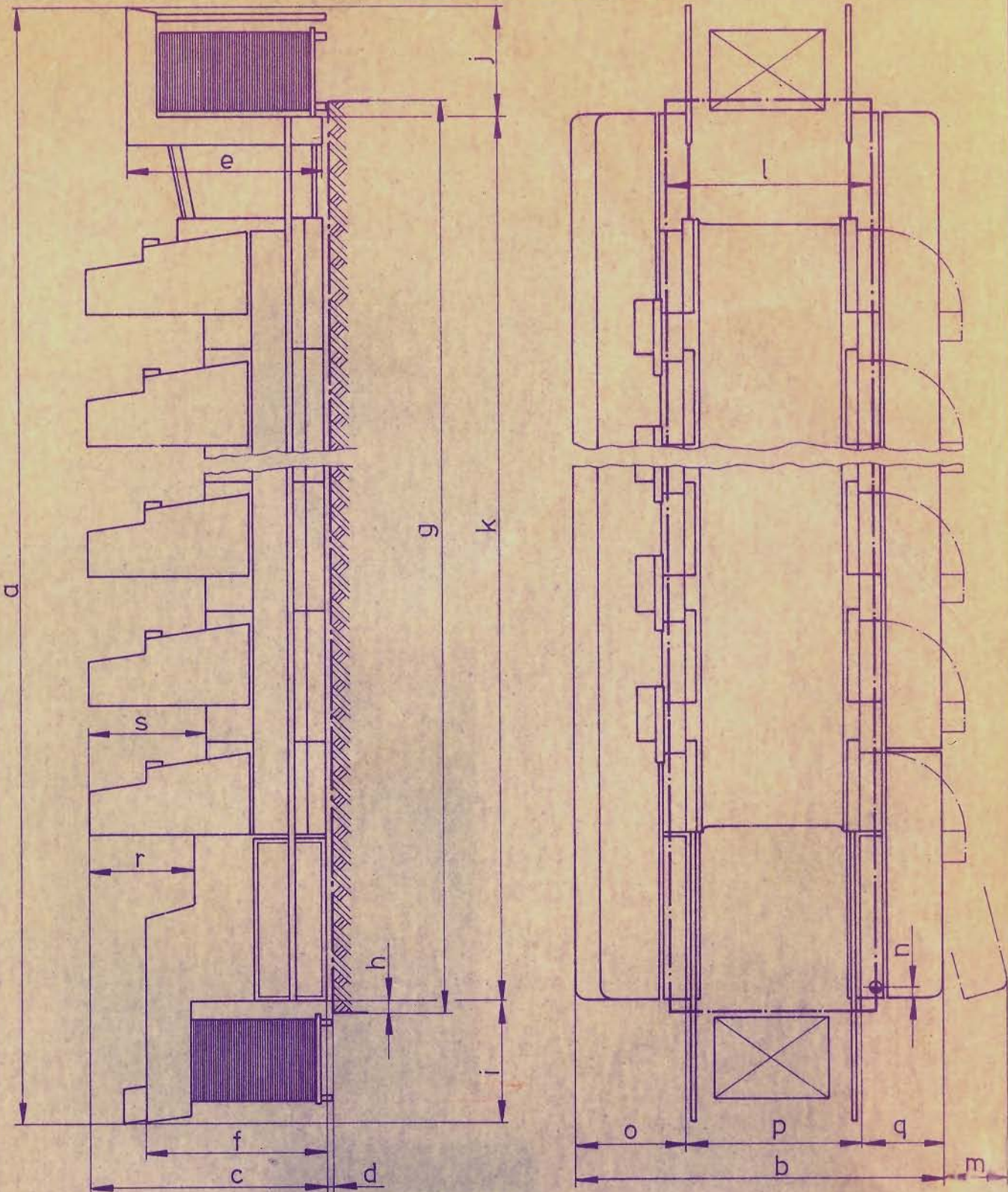
SIX COLOR PERFECTOR  
OFFSET PRESS  
SHEET SIZE: 28<sup>3</sup>/<sub>8</sub>" x 41"

TYPE: TP 104 *blc*

986 00 041

NOV 17 1966

Mitter-Johannisberg Druckmaschinen GmbH



DIESE --- LINIEN GELTEN FÜR DAS FUNDAMENT  
THESE --- LINES MARK THE FOUNDATION

● ELEKTRISCHE ZULEITUNG  
POWER IN-FEED LINES

MASSSTAB 1:50

SCALE 1:50

PROPRIETARY NOTE: THIS DRAWING IS THE PROPERTY OF MILLER PRINTING EQUIPMENT CORPORATION AND IS SUBMITTED IN CONFIDENCE AND SHALL NOT BE REPRODUCED, COPIED, COMMUNICATED, OR DISCLOSED TO OTHERS.

	a	b	c	d	e	f	g	h	i	j	k	l	m
mm	11136	3340	2175	30-50	1732	1580	9200	130	1090	1057	8989	1870	580
Inch	36' 6 <sup>7</sup> / <sub>16</sub> "	10' 11 <sup>1</sup> / <sub>2</sub> "	7' 1 <sup>5</sup> / <sub>8</sub> "	1 <sup>3</sup> / <sub>16</sub> 2"	5' 8 <sup>3</sup> / <sub>16</sub> "	5' 2 <sup>3</sup> / <sub>16</sub> "	30' 2 <sup>3</sup> / <sub>16</sub> "	5 <sup>1</sup> / <sub>8</sub> "	3' 6 <sup>7</sup> / <sub>8</sub> "	3' 5 <sup>5</sup> / <sub>8</sub> "	27' 5 <sup>7</sup> / <sub>8</sub> "	5' 10 <sup>7</sup> / <sub>8</sub> "	1' 10 <sup>7</sup> / <sub>8</sub> "
	n	o	p	q	r	s	t	u	v	w	x	y	z
mm	75	1005	1575	760	1033	1063							
Inch	3"	3' 3 <sup>1</sup> / <sub>2</sub> "	5' 2"	2' 6"	3' 4 <sup>11</sup> / <sub>16</sub> "	3' 5 <sup>7</sup> / <sub>8</sub> "							